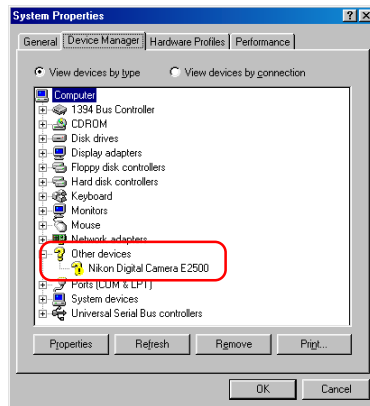


Reinstalling the device driver (COOLPIX series / D100) - Windows 98 Second Edition (SE) -

If **Nikon Digital Camera E2500** is listed under **Other devices**, you need to reinstall the device driver.

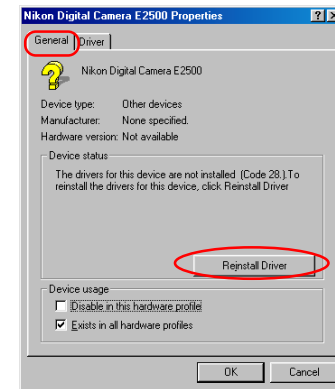
Step 1

Double-click the listing for the **Nikon Digital Camera E2500** that appears under **Other devices**.



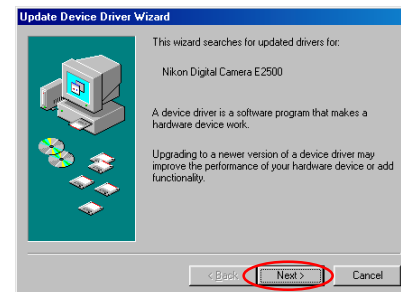
Step 2

The **Nikon Digital Camera E2500 Properties** dialog will be displayed. Open the **General** tab and click **Reinstall Driver**.



Step 3

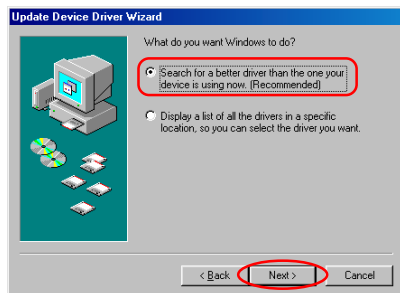
The Windows **Update Device Driver Wizard** will be displayed; click **Next**.



Step 4

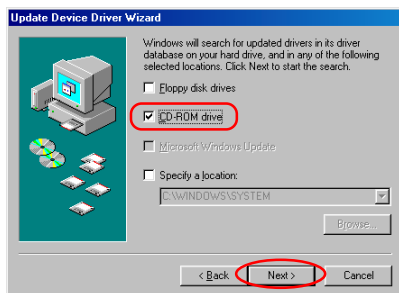
The dialog box shown below will be displayed.

Select **Search for a better driver than the one your device is using now** and click **Next**.



Step 5

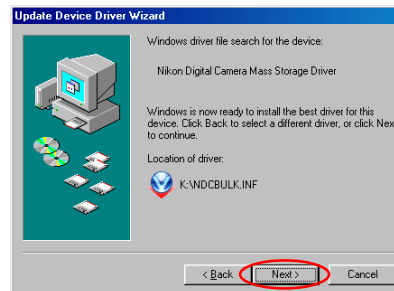
Insert the Nikon View 5 CD into the **CD-ROM drive**. You can prevent the **Welcome** dialog from opening automatically by holding down the SHIFT key while inserting the CD. Select the CD-ROM drive check box and click **Next**.



If the **Welcome** dialog appears when the CD-ROM is inserted, close the dialog by clicking the **Exit** button.

Step 6

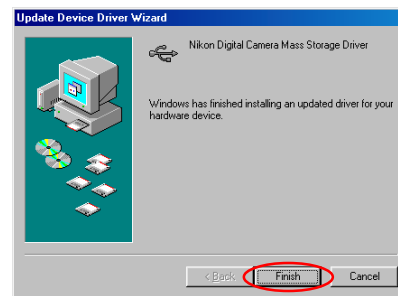
The dialog box shown below will be displayed. Click **Next**.



If the message, **Windows was unable to find a suitable driver for this device**, is displayed, this may indicate that the Nikon View 5 CD was not correctly inserted in the CD-ROM drive or that the appropriate check box was not selected. Click **Back** to return to the dialog shown in Step 5, and confirm that your settings are correct.

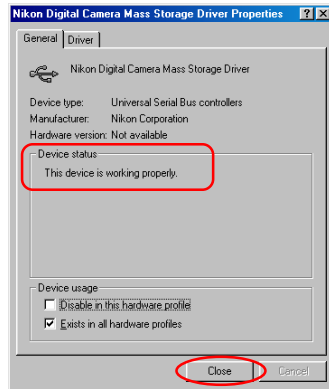
Step 7

A dialog box will be displayed indicating that the driver was successfully updated. Click **Finish** to close the dialog box.



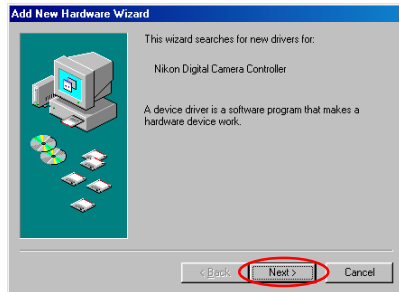
Step 8

Click the **General** tab of the **Nikon Digital Camera Mass Storage Driver** dialog box, and confirm that **This device is working properly** appears under **Device status**. Click **Close**.



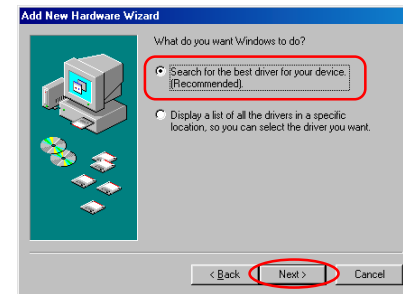
Step 9

The wizard will now start installation of the Nikon Digital Camera Controller with the dialog shown below. Click **Next**.



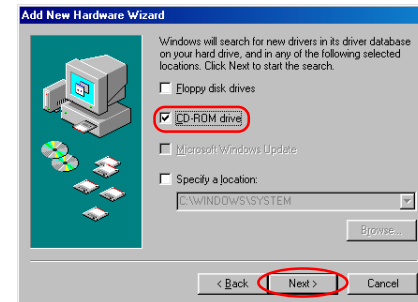
Step 10

Select **Search for the best driver for your device** and click **Next**.



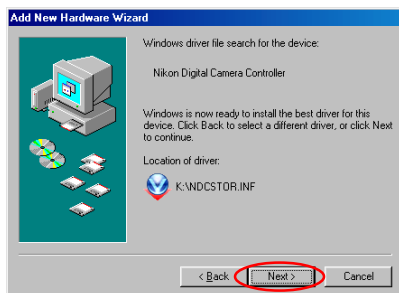
Step 11

Make sure the Nikon View 5 CD is inserted in the CD-ROM drive. Select the **CD-ROM drive** check box and click **Next**.



Step 12

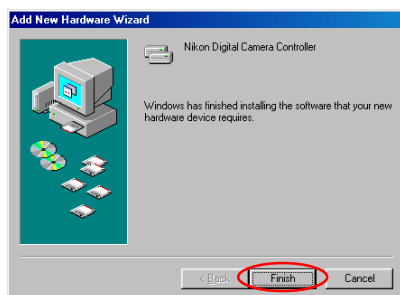
A dialog will be displayed stating that Windows has found the drivers for “Nikon Digital Camera Controller”; click **Next**.



If the message, **Windows was unable to find a suitable driver for this device**, is displayed, this may indicate that the Nikon View 5 CD was not correctly inserted in the CD-ROM drive or that the appropriate check box was not selected. Click **Back** to return to the dialog shown in Step 11, and confirm that your settings are correct.

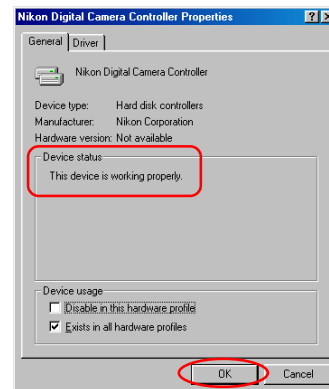
Step 13

A dialog will be displayed indicating that the driver was successfully installed. Click **Finish** to close the dialog box.



Step 14

Click the **General** tab of the **Nikon Digital Camera Controller Properties** dialog box, and confirm that **This device is working properly** appears under **Device status**. Click **Close**.



Step 15

Click **OK** to close the **System Properties** dialog box.

